

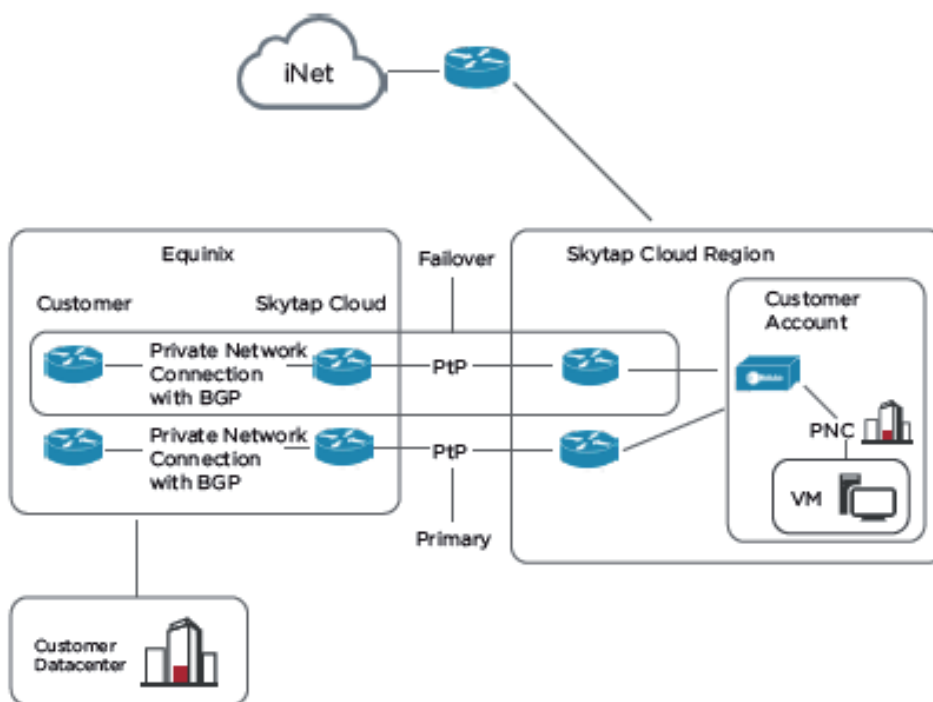
# Skytap Private Network Connection

## Connect your data center directly to Skytap on IBM Cloud

For Skytap on IBM Cloud customers who need a private WAN connection between Skytap and their on-premises resources, Skytap offers a Private Network Connection (PNC) in partnership with Equinix. Skytap PNC creates a dedicated, point-to-point network connection from your data center to Skytap-Equinix regions, enabling faster speeds and lower latency than Internet-based connections.

## Product Details

The diagram below illustrates how a Skytap PNC works with your network.



## Geographic Availability:

US Central and US East Equinix Point of Presence (POP) locations

## Technology Partners:

Skytap PNC is provided through Equinix. Customers can work with their existing network providers to create connections with Equinix.

## Configuration:

Skytap support will configure your connection.

## Network Requirements:

- » To enable a Private Network Connection, your network must meet the following conditions:
- » Private Network Connections require single-mode fiber, 1000BASE-LX (1310nm) for 1 gigabit Ethernet. Auto Negotiation for the port must be disabled.
- » Your network must support Border Gateway Protocol (BGP). BGP MD5 authentication is optional.
- » You can optionally configure Bidirectional Forwarding Detection (BFD) on your network. Asynchronous BFD is automatically enabled for PNC virtual interfaces.

## Key Features

### Transfer Data to Skytap Faster

Migrating large datasets to the cloud can take hours, days, or longer over the public internet. With Skytap PNC, your data travels faster for efficient workload migration.

### Increase Network Performance

Traditional network connections are subject to the subscriptions and outages of internet traffic. Skytap PNC lets you bypass your internet service provider for reliable, faster network performance.

### Enable Hybrid Applications

Hybrid applications accelerate your ability to enhance and extend traditional applications by integrating cloud-native capabilities with traditional components running on-premises. Skytap PNC enables hybrid architectures without sacrificing application performance and reliability.

### Configure Environments Individually

With PNC, you can configure your private connection individually for each Skytap environment. This ensures that applications that require higher bandwidth or a secure network can communicate back to on-premises via PNC, while those that don't can leverage VPN or internet connectivity.

## Get Started

To establish your Skytap PNC, contact your Skytap account representative.

To learn more about Skytap on IBM Cloud, download the data sheet.



Skytap is a cloud service purpose-built to natively run traditional systems in the cloud. Our customers use Skytap for running production, disaster recovery, virtual training labs, and development workloads. We are the only cloud service to support AIX, IBM i, and Linux on IBM Power together with x86 workloads, enabling businesses to accelerate their journey to the cloud and increase innovation. To learn more about Skytap or schedule a demo, visit [www.skytap.com](http://www.skytap.com).



[www.skytap.com](http://www.skytap.com)

Skytap Headquarters  
206-866-1162

Skytap EMEA  
888-759-8278

Skytap Canada  
888-759-8278